



# Ways of working

- **We will begin the meeting shortly**, we are just giving people time to join.
- **Use the chat function during the presentation**
  - for comments and questions
  - To let us know if you can't see us or hear us
- **Your space**
  - Don't worry about children, pets or backgrounds
  - Consider using a virtual background instead of turning your camera off
- **Mute** your mic unless you are talking
- **Turn on your video**
- Let's ensure everyone feels comfortable to contribute by providing a respectful and safe space
- This meeting is **being recorded for administrative** purposes.

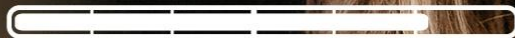
# Upgrading lines



Kildare-Meath Grid Upgrade



# Upgrading lives



Have your say at [eirgrid.ie/KildareMeath](https://eirgrid.ie/KildareMeath)







# Agenda

- Introduction to EirGrid
- Overview of this Project
- Kildare Meath Grid Upgrade Community Forum
- Introduction to Development Perspectives
- Next Steps

*Use the chat box for questions!*



# Introduction to EirGrid

- EirGrid operates and develops the electricity grid in Ireland. We send power from where it is generated to where it is needed.
- We are owned by the Irish Government, and we are a regulated utility. This means we operate solely for the benefit of the electricity user.
- We do not generate electricity – we bring it from generators across the grid. We also operate some interconnectors with neighbouring electricity grids.





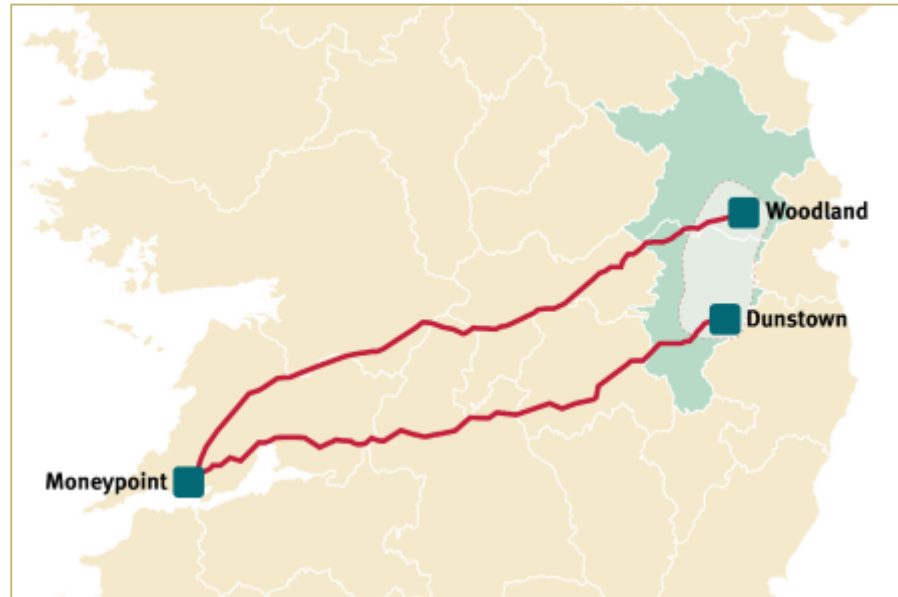
# Introduction to EirGrid

- We run the wholesale electricity market. This ensures electricity is always available at the most economic price possible.
- We do not own the electricity grid, and have no vested interest in adding to it.
- We only upgrade or add to the grid in response to government policy, or where it is an essential response to secure Ireland's electricity supply.



# The Kildare-Meath Grid Upgrade

- Connect Woodland in County Meath and Dunstown in County Kildare
- Integrate electricity generators (renewable and conventional)
- Serve growing demand in the East
- Introduce large cross-country power flows to the East
- Better distribute power and secure supply within Kildare, Meath and surrounding counties



Essential to meet Climate Action Plan target of 70% renewable energy generation by 2030

# Grid infrastructure & Foreign Direct Investment

“Proper infrastructure is key to Ireland maintaining its international competitiveness. **We must maintain an environment that is conducive to doing business** – and adequate commercial energy capacity is central to that.

IDA Ireland views EirGrid’s new strategy to upgrade the national electricity grid as a positive move, and welcomes EirGrid’s stated aim of transitioning the electricity sector to low-carbon, renewable energy.”

Martin Shanahan, CEO of IDA Ireland





# Our approach to projects





# Our Framework for Grid Development

## Step 1

How do we identify the future needs of the electricity grid?

## Step 2

What technologies can meet these needs?

## Step 3

What's the best option and what area may be affected?

## Step 4

Where exactly should we build?

## Step 5

The planning process

## Step 6

Construction, energisation and benefit sharing.

# Options

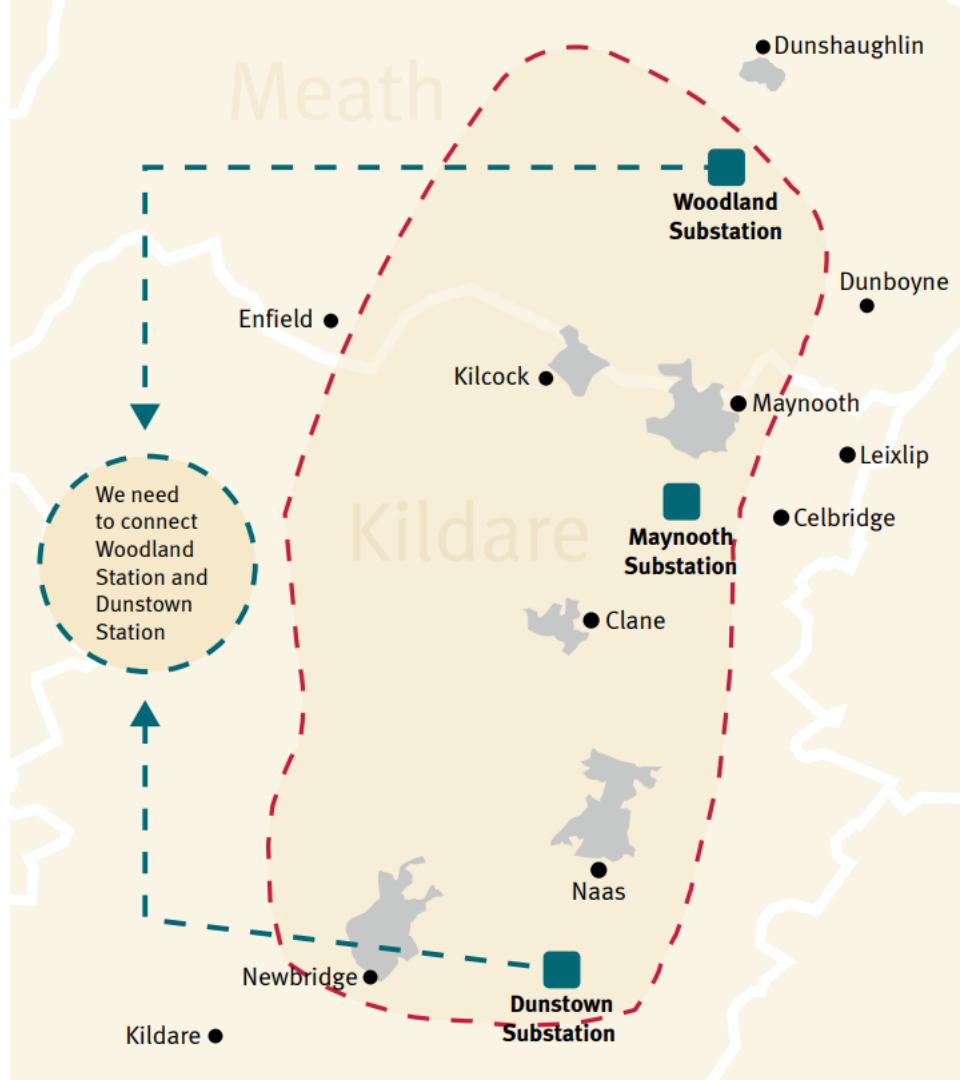
- **Option 1:** Connect two existing 220 kV overhead lines and increase voltage to 400 kV
- **Option 2:** Build a 400 kV overhead line
- **Option 3:** Build a 220 kV underground cable
- **Option 4:** Build a new single conductor 400 kV underground cable in one route
- **Option 5:** Build a new 400 kV underground cable using two new conductors in two separate routes



## Best Performing Option

### A new single conductor 400 kV underground cable in one route

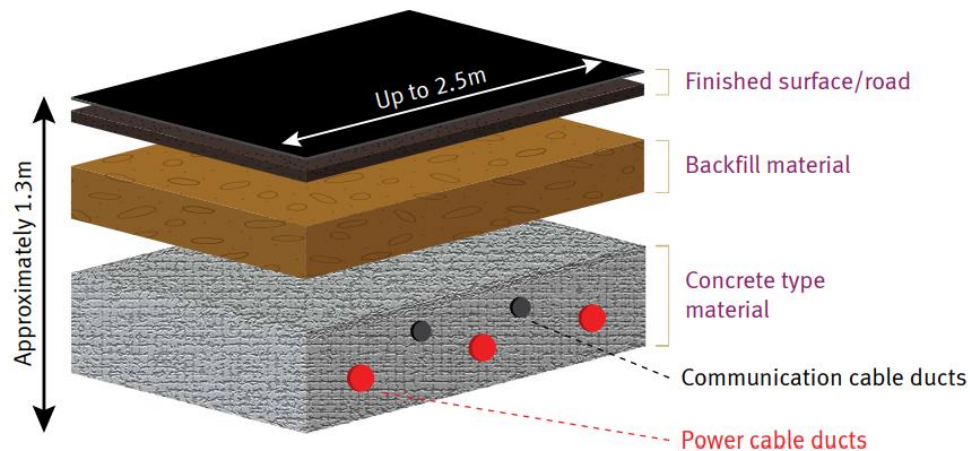
- Preferably installed under the existing road network.
- 2.5-metre-wide trench required.
- Local traffic restrictions required.
- Additional work on the Dunstown and Woodland stations would be required.



## Best Performing Option

### A new single conductor 400 kV underground cable in one route

- Preferably installed under the existing road network.
- 2.5-metre-wide trench required.
- Local traffic restrictions required.
- Additional work on the Dunstoun and Woodland stations would be required.



**Indicative underground cable arrangement**



A person is seen from behind, holding a globe high above their head with both hands. The person is wearing a yellow shirt. The background is a vibrant sunset sky with warm orange and yellow light on the left and deep blue on the right. The globe is positioned in the upper center of the frame.

# Kildare Meath Grid Upgrade Community Forum



# Purpose

- Represent the views of the community and facilitate a 'local voice'
- Provide guidance and feedback at key stages of the project
- Assist the resolution of local issues resulting from the project
- Identify local sources of information and analysis
- Communicate information to a wider group of regional and local stakeholders.
- In future, guide the implementation of Community Benefit



# Initial Work Programme

- Help define principles on how we come up with routes.
- Help us map local constraints/hot-spots that EirGrid should try to avoid.
- Review potential routes that EirGrid develops.
- Advise EirGrid on our approach to consultation.
- Keep updated on the progress of the consultation.

# Initial Membership

- Up to 15 community seats
- Up to 1 Councillor per Municipal District
- **Distribution of Membership**
  - Each area (area defined as village, town or community association representing a geographical community along the route) will be entitled to at least one community seat. This provides a voice for each local area.
  - Once each area has one representative, any remaining seats of the 15 will be redistributed **proportionally** based on a balance of proximity, interest and population.

# Membership Criteria

- Representatives of non-profit organisations within the study area of the project.
  - Organisation may wish to rotate/substitute their representatives as the forum progresses.
- Organisations must be registered with the PPN or have submitted a registration form to their local PPN.
- To maintain a practical level of participation, an organisation can only submit a nomination for **one seat** - 1 Group, 1 Representative.



# Expressions of Interest

- [www.eirgrid.ie/KildareMeath](http://www.eirgrid.ie/KildareMeath)
- Deadline: 30 June
- First Meeting: TBC July

# Development Perspectives

- Bobby McCormack
- Independent Chair of the Forum
- Responsible for managing meetings and agreeing the work programme



Questions?







**Thank You!**

**Email the team:**

**[KildareMeath@eirgrid.com](mailto:KildareMeath@eirgrid.com)**

**Phone Gráinne:**

**085 887 4798**

**Keep an eye online:**

**[www.eirgrid.ie/KildareMeath](http://www.eirgrid.ie/KildareMeath)**

