

Child and Family Support Networks Meath

Details of Service delivery during Covid - 19

Louth Meath Child and Family Support Network Coordinator



The Louth Meath Child and Family Support Network Coordination team are still open to and receiving PPFS referrals and Meitheal requests.

All Meitheal meetings are postponed. CFSN Coordinators are linking with all Lead Practitioners on open Meitheal processes and ensuring they are contacting parents on an ongoing basis, identifying any needs during COVID-19.

The Louth Meath CFSN Coordination team will continue to link in by phone and email with CFSN members in their Network. Sharing information constantly, updating service provision and identifying gaps and needs .

East /South Meath Child and Family Support Network Coordinator

Contact: Alice O Halloran

Phone: 087 2275645

Notrth/South Child and Family Support Network Coordinator

Contact: Jackie Jackson

Phone: 087 7704042

Tusla Parenting Support Website: www.parenting24seven.ie

Louth Meath Prevention Partnership and Family Support

Meath PPFS Family Support Practitioner Team

The Meath Family Support Practitioner service delivery is continuing through phone contact with families, on a weekly basis. The allocated PPFS worker will be the contact person for families that are open to the Meath PPFS team.

If the family are not allocated to a Family Support Worker, please contact the office where a staff member will answer and direct your call to the relevant personnel, or send out a PPFS Referral form. Please leave your name and number on the answering machine if there is no staff available to take your call at that particular time.

Meath PPFS Family Support Team

Navan Family Resource Centre,

Dawn Hegarty

Phone: 046 9073178

Avril Mc Kenna

Phone: 087 1411832

Tusla Parenting Support Website: www.parenting24seven.ie

To update your service provision please email Jackie Jackson or Alice O Halloran Child & Family Support Network Coordinators Meath - Jackie.Jackson@Tusla.ie,

Alice.ohalloran@tusla.ie

CYPSC Meath

Covid 19 –Planned Supports and Interventions by Louth and Meath CYPSC

March 2020

Community Solidarity: Everyone can, and must, play his or her part in combating COVID-19.... Our voluntary and community organisations are at the heart of the State's coordinated response to COVID-19, in caring for each other.

(Ireland's National Action Plan in Response to COVID-19 updated 16th March 2020).

Establish and Maintain strong communication:

CYPSC will work collaboratively to provide up to date information and support on the national website www.cypsc.ie and the new live website in Tusla Louth/Meath www.familysupportmeath.ie Maintain links with your local CYPSC Co-ordinator, who will work over the coming weeks to support good cross-community communications and information dissemination.

During the current public health Crisis, Bernard Gloster CEO has made a decision to focus on the three critical areas including –

1. Child Protection and Welfare Concerns

Tusla continues to accept and respond to all referrals of reasonable grounds for child protection or welfare concern.

This can be done via the secure portal on the Tusla Website or by contacting us at our:

Dedicated Point of Contact at Tel 046 9098560.

2. Support to Children in Care & After Care

Louth Meath are responsible for 410 children in care, the majority who live with foster families with a small number living in residential centres. We continue to provide support to all of these children and their parents during this difficult time.

We are working on an emergency foster carer plan as the current crisis will potentially have an impact of foster carer availability.

3. Domestic, Sexual & Gender Based Violence Services

Tusla funded Domestic, Sexual & Gender Based Violence Services provide free and confidential services: emergency shelter, legal advocacy, support groups and domestic violence education. The services include-

- Women's Aid Helpline (24 hours) 1800 341900
- Rape Crisis Centre National Helpline (24 hours) 1800 778888
- Drogheda Women's Refuge: Refuge/Support Service Tel: 041 984 4550
- Women's Aid Dundalk: Refuge/Support Service Tel: 042 933 3244
- Meath Women's Refuge: Refuge/Support Service Tel: 046 902 2393
- Men's Aid Ireland (formally AMEN) : Support Service & Confidential Helpline – 01 554 3811
- Email: Hello@mensaid.ie

TUSLA COVID 19 SERVICE UPDATE
Louth Meath – Grainne Sullivan, Area Manager
Continued

While the above three areas have been prioritised, Tusla continue to provide the following -

4. Tusla Education Support Service (tess)

Tess has three strands namely the Statutory Educational Welfare Service (EWS) and the two school support services the Home School Community Liaison Scheme (HSCL) and the School Completion Programme (SCP). Tess continues to provide supports to families during this time and have worked with the Department of Education to ensure that School Lunches have been made available to DEIS schools.

There are 4 EWO's who are working remotely at present. They are maintaining contact with the families and are liaising with other professionals who are involved with these families.

Senior Manager: Georgina.traynor@tusla.ie Tel 087-7601955

5. Prevention, Partnership and Family Support

The Family Support Teams are continuing to provide remote support to families & are also supporting their colleagues on their more critical work. The Child and Family Support Networks (CFSN) have developed a community response plan which will now align where appropriate with the county council plans. Some of the key areas being progressed are –

- Audit of current service delivery in the Community and Voluntary Sector to ensure that information is shared across the network
- Targeted families in need of practical support
- Delivering play packs to targeted families & sharing of key resources to children / parents on internet safety / safety card etc.
- The Tusla funded services across Louth Meath continue to provide support in line with Public Health advice

TUSLA COVID 19 SERVICE UPDATE
Louth Meath – Grainne Sullivan, Area Manager
Continued

6. Children and Young Peoples Service Committee

The Louth & Meath CYPSC have developed a response plan which will now align where appropriate with the County Council Plans. The key areas being progressed are –

- Audit of Service Delivery in the Statutory Sector to ensure that information is shared across the network
- Service Activity at a local level including work on Hidden Harm, Positive Play, Mental Health Toolkits in including bereavement resources, Physical Activity for children, NVR- Key Messages communique.
- Sharing of information/Communication between CPYSC Members, the PPN and the development of resources on internet safety / safety card
- There is Regional Collaboration on finalising a Critical Incident Protocol.

Tusla also provide Early Years Inspection Services and Adoption Services.



SPRINGBOARD NAVAN



- **Family Support.**
- Tailored Programs of family Support continue to be provided to families by their key worker via phone and electronic communication.
- Parent support groups. (He's My Dad, Connect Women's group and The young Mothers Group)
- The meetings of the groups is suspended for the time being. The group facilitator is maintaining weekly contact with participants via phone and electronic support.
- **Children's Access Support Service.**
- The Children Access Support Service is operational with additional guidelines in place. Prior to any access taking place a risk assessment is conducted to determine if it is reasonable to proceed with the access, the safety of the child, parents, foster carers and staff is our primary concern.
- **Counselling.**
- In line with recommendations face to face counselling is suspended at present. Counsellors are providing ongoing support to parents and children via phone and electronic communication on a case by case basis.
- **General.**
- A limited number of staff continue to operate daily from our offices at Mangan House, Wyndtown, Navan other staff are working from home. The agency has contingency plans in place to maintain phone and electronic support to parents and their children if we are required to close our office base.
- Contact Details: <http://meathspringboardfamilysupportservices.ie>

Tel 046-9078220

Kells Peoples Family Resource Centre



- The Resource Centre is closed and all face to face work is suspended
- Our core staff are working from home
- Our CE and Tus Staff have been withdrawn however some continue to work from home on administrative support tasks
- All of our group support services and activities are suspended for the present.
- All one-to-one [info, counselling, therapies etc] and family support services are being provided by phone and/or online.
- We are checking in regularly by phone with anyone we know is in a vulnerable situation and offering whatever support, comfort and information we can provide
- We have limited supply of food so we can't run the food bank but can provide some limited provisions for individuals/families Phone/email support - responding to queries, signposting, advocacy and onward referral where necessary
- Contact Details: 046 924 7161



Trim Family Resource Centre



- Phone/email support - responding to queries, signposting, advocacy and onward referral where necessary
- Admin support (printing DEASP forms etc)
- Support with filling out paperwork (by phone)
- Linking by phone with regular/previous, Centre/Programme participants to identify any additional needs
- Continuation of Food Bank support to existing service users (due to limited capacity/resources, we are not advertising publicly but will offer the service to families/individuals that we have already engaged with)
- Updating Social Media (mainly Facebook) with relevant info/guidance and suggestions.

Contact Details: All enquiries should be directed to mobile numbers as centre is closed as of 30/03/2020

- 087 1877553
- 086 7802768
- 087 3344735



East Coast Family Resource Centre



All group work and one to ones have been suspended until further notice. Staff have been advised to work remotely/from at home. Families receiving family support previously will continue to receive support via phone and email. Families attending parenting/Womens groups also being supported via phone.

- Contact Details: All enquiries
- Pamela Brady 0860250974
- Kim Grenham 0873330444
- Patricia Halligan 0872183789



SO SAD



Phone support being provided, assessments for new clients now completed on phone, counselling ongoing through Boom. Contactable 24/7

Contact Details: Contact can be made 24/7

Phone: 046 9077682

Email: sosadnavan@gmail.com

Facebook [@sosadnavan](https://www.facebook.com/sosadnavan)



Pieta House



The Pieta House Suicide Bereavement Liaison Service for Louth and Meath continues to be available however it is phone support only because of the current circumstances until further notice.

Contact details: Catherine Brazil, SBLO Louth and Meath. Phone 085 – 7380444.



Meath Womens Refuge & Support Services



Meath Women's Refuge and Support Services will continue to maintain a 24 helpline and emergency refuge accommodation during the Covid 19 crisis period. We have stopped our face to face contact in the community but we are in contact with women in the community through our helpline service. We continue to support women who need to attend court for emergency court orders and in the first instance this is done by phone and we will complete court paperwork for a woman and we will organise for her to call to our offices to collect the documentation from us as we are not presently doing court accompaniment.

Contact Details: our general 24 hour helpline details which are 046 9022393, Email support@dvservicesmeath.ie

Facebook page is Meath Women's Refuge and we are also on twitter too.

Our new website is www.dvservicesmeath.ie



RAPE CRISIS
NORTH EAST CLG

Rape Crisis North East Centre



Child and Family
Support Network

The Rape Crisis Centre **Freephone** helpline number is open those who need access to crisis counselling and support

Monday – Friday 10.00am – 4.00pm for

Contact: 1800 21 21 22

For existing clients of the Rape Crisis Centre – The Therapist will make contact to arrange counselling appointments over the phone. Contact manager@rcne.ie for further information.

For New Clients – to arrange an appointment email manager@rcne.ie or phone 1800 21 21 22



Family addiction Support Network

All Family Addiction Support Network group meetings are postponed for now but phone support is available.

Coordinator: Gwen McKenna

Contact: 042 9355251 / 087 9046405

Catchment areas:
Louth Meath, Cavan and Monaghan

Website: www.fasn.ie

| | | |
|---|---|--|
|  <p>CALM</p> <p>Calm is the #1 app for meditation and mindfulness. Manage your anxiety, lower stress and sleep better using Calm's guided meditations, sleep stories, breathing programs, and relaxing music.</p> |  <p>SOBER GRID</p> <p>Sober Grid connects you to sober people in your community and around the globe so you can build a strong sober support network and inspire others.</p> |  <p>DAYLIO</p> <p>Daylio enables you to keep a private diary without having to type a single word. Pick your mood and track your activities to help establish new healthy habits and increase productivity.</p> |
|  <p>SELF-HELP FOR ANXIETY MANAGEMENT</p> <p>If you're interested in self-help, but meditation isn't your thing, the SAM app offers a range of self-help techniques for people who are serious about learning to manage their anxiety.</p> | <p>FREE MENTAL HEALTH & ADDICTION APPS</p> <p>Available on iOS and Android</p> |  <p>NO MORE!</p> <p>Embark on a self-improvement journey with No More! If you're trying to overcome a bad habit or serious addiction No More! can help you conquer it.</p> |
|  <p>HEADSPACE</p> <p>Headspace is meditation made simple. Learn the life-changing skills of meditation and mindfulness in just a few minutes each day.</p> |  <p>SOBER TIME</p> <p>Sober Time helps you stay motivated by tracking how long you have been sober. If you're trying to quit drinking, drugs or any other addiction, put the power of sobriety back in your hands.</p> |  <p>WHAT'S UP?</p> <p>What's Up? provides helpful tools based on the principals of Cognitive Behavioural Therapy and Acceptance Commitment Therapy to help you cope with Depression, Anxiety, Anger, Stress and more.</p> |

To update your service provision please email Jackie Jackson or Alice O Halloran Child & Family Support Network Coordinators Meath - Jackie.Jackson@Tusla.ie, Alice.ohalloran@tusla.ie



Feidhmeannacht na Seirbhíse Sláinte
Health Service Executive

Substance Use Support for Teens (SUST)



Child and Family
Support Network

The substance use support service for teens are avoiding face to face sessions with young people however they may still see some young people if there is significant concerns. However there is a challenge in their ability to access locations as some youth services and schools where they used to see young people are closed.

Most of their contact is becoming phone contact as a result.

Families can continue to contact:

Philip James 087 3752760 or Lorraine Wright 087 173 2088.

To update your service provision please email Jackie Jackson or Alice O Halloran Child & Family Support Network Coordinators Meath - Jackie.Jackson@Tusla.ie,

Alice.ohalloran@tusla.ie

NYPD

- Until Friday 27/03/2020 NYPD were working both remotely and meeting young people face to face on an individual basis.
- We also provided Food hampers to our most vulnerable families.
- Our hope is to continue the food provision weekly but as of Friday are awaiting HQ to deem our work as essential and provide permits.
- We will continue our support through messenger, face book, phonecalls and apps like Zoom.
- Contact Details: 046 9072575
- www.foroige.ie



Smart Programme

South Meath Area Response To Teenagers



Providing phone support to Young people on the programme and also support being provided to parents, around : Education- routines home, school work.

Signposting to services as required.

Currently looking at setting up family take away evenings, also option of creative writing group

Ongoing phone support being provided by youth justice workers.

Contact Details: 087 4146653

Email: smart02@eircom.net



CAMHS Child & Adolescent Mental Health Services



Service has continue as normal as it can but as you can imagine it is difficult. We continue to reduce face to face meetings and continue to hold telephone consultation with young people and parent/s in addition to sending out information for individual clients based on their needs. We are still waiting for technology for video conferencing etc. We continue to deal with urgent referrals as they come in to the service and at present continue to have our MDT meeting in larger rooms and over conference calls within the building but with less staff.

Currently CAMHS remains open but with limited staff.

Contact Details: 046 9079350, Hazel House, Kennedy Road, Navan.

www.hse.ie



HSE Speech & Language Therapists



Clinics are currently cancelled, If contact required please contact your allocated STL by phone or email as per details given at previous clinics, or alternatively Kim Tucker Manager, 0469098818



Meath County Childcare Committee



MCCC are continuing to operate during this situation. We may at times be working remotely however are contactable as normal. A full list of emails and work numbers have been sent out to all the early year providers in Meath and also updated on our Facebook page. Currently the Government have requested that as of 12th March all early years settings are to close until the 29th of March 2020. We are still however in communication with the Department of Children and Youth Affairs and continue to support and update early year providers and families.

Contact Details: At this time the Support and Development Team can be contacted as normal, as can many of our other staff as needed. Our main number remains the same 0469073010 to contact the office. Fiona, line Manager and Co-coordinator available by email fiona@mccc.ie or 0867961065 lynda@mccc.ie or 0876224791.



An Garda Síochána

Ireland's National Police and Security Service

COMMUNICATION FROM AN GARDA SÍOCHÁNA



Dear all,

An Garda Síochána is pleased to collaborate with our key partners in diversity by providing as much support as possible to all individuals and communities, especially minorities and isolated persons during these challenging times. I wish to reaffirm the public commitment made by Deputy Commissioner John Twomey on behalf of An Garda Síochána to support the most vulnerable in our society, particularly our elderly. An Garda Síochána has always worked closely with our communities and we continue to do so in these extraordinary times.

We are very mindful of the needs of victims of crime, especially victims of hate crime, and we will continue to fully investigate all reports during these times. We are making continued progress on our commitments under the [Garda Diversity & Integration Strategy](#) 2019-2020 in areas such as improved recording of hate crime, improved response to hate crime and enhanced reporting facilities by way of initial online reporting and third-party referrals. We expect further announcements in that regard later this year.

We have developed bespoke Crime Prevention Advice for all persons during the current Covid-19 crisis to ensure all individuals are alert to bogus callers, online scams and home security. I attach the English language version of this Crime Prevention Leaflet which I hope you will all share, by whatever electronic/digital means possible, to reach as many communities, groups and individuals as possible. This advice is also available in eleven different languages on garda.ie/!3FXU8D.

The Garda National Diversity & Integration Unit can be contacted on [01-6663150](tel:01-6663150) or by email to diversity@garda.ie.



COVID-19 Home Crime Prevention Advice



Keep lights on inside and out.



Do not keep large amounts of cash at home.



Keep valuables & keys out of sight.



Be alert to online and telephone scams.



Do not share personal or financial data.

For up to date advice on COVID-19 visit HSE.ie

Visit www.garda.ie for more crime prevention advice

An Garda Síochána encourages the reporting of Hate Crime For more information see the [Garda Diversity & Integration Strategy](#)



COVID-19 Home Crime Prevention Advice



KEEP UNEXPECTED CALLERS OUT
Do not open the door. Use the door chain. Look for ID.



Use only the services of people you know and trust.



If you require assistance call your local garda station.



Keep a lookout for friends and neighbours while adhering to appropriate physical distancing.



For up to date advice on COVID-19 visit HSE.ie

Visit www.garda.ie for more crime prevention advice

An Garda Síochána encourages the reporting of Hate Crime For more information see the [Garda Diversity & Integration Strategy](#)



IGNITE



We've made the difficult decision to postpone the Ignite Programme for now to help mitigate the spread of COVID-19.

This is obviously a fluid situation, so we'll be monitoring and adjusting our plans and timeline accordingly.

Phone contact /support will be maintained throughout this period

Phone contact: Samantha Richards 0867802672

In partnership with Meath Partnership we aim to deliver the IGNITE initiative to address the training and employability needs and advance the interests of rural youth in Meath with a specific focus on training and confidence building to enhance labour market skills, improve employability, engage in assisted work placement and develop entrepreneurial know how. This Programme is open to 18-25 year olds, living in Meath.

Mental Health Ireland have a range of information available useful links on www.mentalhealth.ie

Mental Health Ireland staff are working from home so you can contact them by email directly - <https://www.mentalhealthireland.ie/our-staff/> or via info@mentalhealthireland.ie

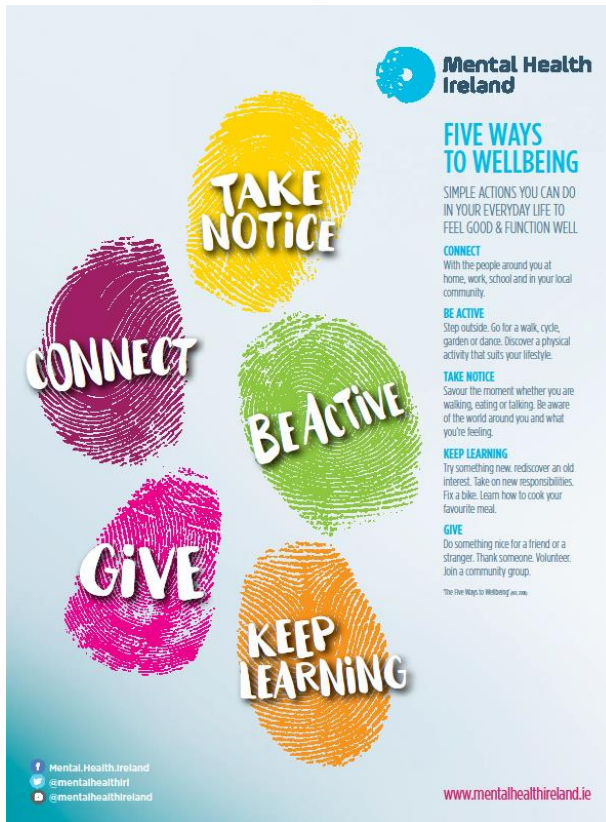
The HSE Mental Health Information line is **1800 111 888**

Samaritans helpline 116 123 or email jo@samartians.ie

Mental Health Ireland urges people to stay connected and informed amid Covid 19: <https://www.mentalhealthireland.ie/news-events/wellbeing-covid19/>

Tips for keeping your mental health balanced during this time: <https://www.youtube.com/watch?v=sE5yTNIHBmw>

Five ways to wellbeing poster



<https://www.mentalhealthireland.ie/wp-content/uploads/2019/11/MHI-Five-Ways-to-Wellbeing-Poster.pdf>

06/04/2020

Five ways to wellbeing leaflet



<https://www.mentalhealthireland.ie/wp-content/uploads/2019/11/MHI-5-ways-to-wellbeing-leaflet.pdf>



Child and Family
Support Network

To update your service provision please email Jackie Jackson or Alice O Halloran Child & Family Support Network Coordinators Meath - Jackie.Jackson@Tusla.ie, Alice.ohalloran@tusla.ie

27

Men's Aid Ireland (Previously- ANYMAN/AMEN)

Services we provide, focusing on the North Eastern part of the country:

National Confidential Helpline – 01 554 3811

Legal clinic – Information about Domestic Violence Orders, Access, Custody and Other Family Law Matters,

One to one practical support – Explaining Court Paperwork, Safety Planning, Care plans,

Counselling – By Telephone

Counselling – Face to Face

Court Accompaniment – Dolphin House, Dublin (Family Courts)

Out-Reach Clinics in Monaghan, Cavan, Louth and Meath Training

Certified training by Andrea McDermott on all Domestic Abuse areas

CONTACT DETAILS:

Phone: 01 5394 277

Helpline: 01 5543 811

Website: www.mensaid.ie



SHINE



Shine

- Support for people with mental ill health. Shine also are currently providing remote support and an outreach service to people who use Shine services by phone and email.
- Visit www.shine.ie or email phil@shine.ie

YourMentalHealth

While it may not be possible to get face to face appointments there are a number of service providers that offer online and phone mental health supports and services. These include online counselling, phone and text services as well as online supports which can be found on www.yourmentalhealth.ie. The YourMentalHealth.ie website provides information and signposting on all mental health supports and services that are available nationally & locally provided by the HSE and its funded partners. You can also call the freephone YourMentalHealth Information Line to find supports and services **1800 111 888** (any time, day or night).



GROW



GROW Mental Health Recovery

- Information line **1890 474 474**
- Visit www.grow.ie or email info@grow.ie for more information, or while peer support groups are postponed

Mental Health Ireland

Mental Health Ireland

- Information and support for people who experience mental health difficulties
- Information line **(01) 284 1166** (from 9am to 5pm Monday to Friday)
- Visit www.mentalhealthireland.ie or email info@mentalhealthireland.ie for more information

Aware

Aware Support Line

- Information and support to anyone over 18 about issues relating to their own mood or the mood of a friend or family member, or who experiences depression or bipolar.
- Freephone Support Line **1800 80 48 48** (from 10am to 10pm every day)
- Support and self-care groups nationwide, are cancelled until further notice
- [Life Skills Online Programme](#) continuing as normal
- Email supportmail@aware.ie for services information and support

Samaritans



Samaritans

Emotional support to anyone in distress or struggling to cope

Freephone **116 123** (any time, day or night)

Email jo@samaritans.ie

Meath PPN Public Participation Network

The **Meath PPN** has developed a **map of community supports** across the county:

<https://www.meathppn.ie/meath-community-response-to-covid-19/>

We are updating this map in real time. As the map grows, it will show the support available if needed. If your group is planning supports and wish to be included on the map, please send an email to Danielle Monahan (Resource Officer) : meathppn@meathcoco.ie

The Government has contacted all PPN members with regards to Covid-19 information and resources. Please find the **latest Government communication** [here](#) with links to content.

We will be updating the **PPN newsfeed** with information and content. Please keep in eye [here](#) for updates.

Contact Details: Danielle & Dave, Meath PPN Team Tel: 087 3512281

Email: meathppn@meathcoco.ie

Meath County Council – Homeless Services



Meath County Council continues to provide a homeless service. Contact Meath County Council and request that a settlement officer call you back.

Contact details: Meath County Council 046 9097000

Meath Travellers Workshops – Covid-19 response 3rd April 2020



The manager of Meath Travellers Workshops has been in consultation with HSE and Meath County Council in regards to the Traveller specific supports during the Covid 19 Crisis. He is today taking part in a teleconference with the Community Response Forum with Fiona Fellon, Chair, Senior Executive of the Community Section.

There is an overall contact number for **Meath County Council 1800 808 809**

As an organisation we are disseminating through social media; the recommendations for Covid-19, and the supports available and the contact details. This has been further shared through Facebook, WhatsApp and the young people are sharing the information through Instagram.

Information Posters have been created by Pavee Point and Involve and these have also been used.

Radio and newspaper articles have been supported by LMFM and Meath Chronicle highlighting the conditions that Travellers are living in. Following an inspection on Fire Safety of the St Patricks Park site by Meath County Council, a prefab is going to be constructed to support the Travellers camped illegally on the green, to provide much needed washing facilities.

The Community Development Worker has been out visiting Traveller and Roma families that she is aware have literacy issues to ensure they are aware of the need for social distancing and hygiene to prevent the spread of the virus.

The Community Development Worker is pleased to report that Travellers are acting on this advice and she has witnessed very traditional Travellers, who would usually shun authority, walking around with a mask on and using wipes and sanitizer.

To date, there are very few cases reported and they have contacted the **HSE Traveller Hotline for CH08. 083 1006300**

The community development worker has been supported by local initiatives like Athboy People Who Share Care group and Cllr Alan Lawes to provide Traveller families with practical support and to ensure that Traveller needs are considered. These voluntary groups are stretched to the limit.

The Traveller Counselling Service 089 443 7296 has increased the hours of availability and is providing counselling over the phone on the dedicated mobile number.

The work in Carnaross is continuing to be supported by the LMETB facilitator and one of the participants that lives within 2km of the Allotments. They are making sure plants are watered and even managed to sow some potatoes.

Meath County Council Library Service



Although all 12 libraries remain closed to the public for the moment, we are still offering a wide range of free online services and have lot of great activities, storytimes, competitions and information on our Facebook page.

www.meathlibraries Twitter: @MeathLibrary Facebook: Meath County Library

To join the library online

Great news! It's now possible to join the library online & use

Borrow Box straight away! (This is our Free Ebooks and Eaudiobooks service for children and adults)

Just go to <http://librariesireland.ie/join>, complete the registration, set a PIN and you'll be able to log in to Borrowbox with those details to download eBooks and audiobooks straight away.

Newspapers

Want to keep up-to-date with the news and don't want to leave the house? We have you covered. Check out our new free online newspaper service-Pressreader: <https://bit.ly/2Wgz9Vn> PressReader has publications in lots of different languages from lots of countries. And there is also a translation option for lots of articles.

Magazines

Our digital magazines are not just for adults, there are lots of magazines especially for children. Check them out at <https://www.meath.ie/council/council-services/libraries/online-resources/digital-magazines>



Child and Family
Support Network

Language Learning

Did you know that you can access free online language resources (Transparent Language) with your library membership. If you're already using the RBDigital app for eMagazines you're already set up. Accessible through the Education tab.

Online courses

Through your library membership you have access to Universal Class (over 500 free online courses). From Excel to Dog training and from creative writing to flower arranging, there's something for everyone. Log on with your library card to or find all our online resources here:

<https://www.meath.ie/council/council-services/libraries/online-resources>



Meath County Council - Isolation Plan should a vulnerable individual or family need assistance.

We have identified a number of units to be used in the event where a person or family needs to self-isolate and cannot do so in a caravan or mobile home.

Regarding Travellers who may find themselves in this position, I am the lead link: louise.clinton@meathcoco.ie

The process is as follows:

The person needs to provide confirmation from their GP that self-isolation is required. Client also needs to provide consent to their GP for MCC to liaise.

The client is then advised of the isolation unit.

The Civil Defence will provide transport if necessary.

The Civil Defence will also deliver small goods to the unit, duvets, pillows, crockery etc. , along with daily food supplies.

The client is then provided with the HSE Guidelines on self isolation protocols.

The client then returns home when cleared to do so by the HSE.

YAP Ireland will continue to provide the service to children, young people and families to the best of our ability in partnership with Tusla staff and partners in the community.

1. We are currently providing a service to young people and families open to us. All staff are following HSE guidance when working with young people and families and are role modelling good practice re. hand washing, social distancing etc., We are providing phone support in some cases either where there are specific health vulnerabilities in the family or for the advocate.
2. Where possible and appropriate we are providing support in the home and are still taking young people out to help to support the family. Engaging young people in walking, games etc., in the fresh air is working well.
3. We are providing competitions and information on good website activities etc., for young people, families and advocates to help them while in the house.
4. We are still opening cases where this is possible and in agreement with Tusla social workers and families.
5. We are available for emergency referrals and will try to match them if we have availability as per normal procedure.

Contact details: Donna Brazier, Acting Service Manager: 0871308439 | Email: dbrazier@yapireland.ie

Website: www.yapireland.ie .

Through our dedicated telephone and email support service Barnardo's staff can provide support and advice to parents on the following issues: How to talk to your children about the corona virus
Setting a good routine. Managing children's behaviours and sibling dynamics. Managing aggression and family discord. Home schooling/managing school expectations. Fostering natural learning opportunities in the home. Healthy eating. Accessing fun and educational activities for families and individual children. Managing your child's worries. Self-care for parents Helping parents manage their own worries and anxieties
Managing children's online activity

Contact details: You can make contact with this service by:

Phone 1800 910 123 between 10.00am and 2.00pm Monday to Friday

Email: parentsupport@barnardos.ie.

We also have a wide range of resources available on our website



Jigsaw (National Centre for Youth Mental Health CLG), registered in Dublin, 421016, registered charity, CHY 17439.

The information contained in this email transmission is confidential and intended solely for the addressee(s). If you have received this email in error, please delete the email from your system and destroy all hard copies.

Is cuideachta é Jigsaw (An tIonad Náisiúnta do Shláinte Meabhrach na hOige CLG) atá cláraithe faoi theorainn ráthachta, 421016, agus is carthanas é atá cláraithe, CHY 17439.

Tá an t-eolas atá sa ríomh-phost seo faoi rún an tseolair amháin. Más tré d'fhearmaid a fuair tú an ríomhphost seo, le do thoil déan é a scrios agus aon chóip crua atá agat a scrios chomh maith.

JIGSAW



Currently, our face to face support to young people on our caseload is suspended at the moment and we contacted those parents/YP before we closed the service on Friday, March 13th last.

Jigsaw National Office is assessing the establishment of tele-support to young people that were using Jigsaw services, We plan to contact these YP/Parents when this service is up and running, hopefully next week, to offer tele-support with the Jigsaw Clinician that they were working with.

Jigsaw is planning as to what support we can offer to young people, parents, teachers, the wider community should this period of CoVid-19 run on for a number of weeks/months. Contact Details: plans are currently in place re: 'comin live' details will be provided when this is up and running. For now, we are directing any calls/emails to Jigsaw Meath to our [Jigsawonline.ie](https://www.jigsawonline.ie) service where there is support from Jigsaw via webchat and there are group chats also that YP can join.



- ISPCCC
- Childline is Ireland's 24-hour national listening service for all children and young people (under the age of 18) in Ireland. It is private, confidential and non-judgemental and can be contacted for free from anywhere in Ireland.
- Childline can be contacted by any child or young person by **calling 1800 66 66 66** (24 hours a day), **texting to 50101** (10am – 4am daily) or **chatting online at [Childline.ie](https://www.childline.ie)** (10am – 4am every day).
- Childline calls, webtexts and messages are still up and running and will remain open during the crisis.

CHILD ABUSE DOES NOT STOP IN A PANDEMIC

#NeverGiveUpOnAChildEver

HOZIER

FRIDAY

**DANNY
O'REILLY**

SATURDAY

**WILD
YOUTH**

SUNDAY

KODALINE

MONDAY

**DERMOT
KENNEDY**

TUESDAY

**PICTURE
THIS**

WEDNESDAY

**GAVIN
JAMES**

THURSDAY

AND MORE TO BE ANNOUNCED

7pm

EVERY NIGHT

INSTAGRAM LIVE STREAMS EVERY NIGHT

DONATE NOW AT [ISPCC.IE/DONATE-NOW](https://ispcc.ie/donate-now) TO DONATE €4 TEXT **CHILDHOOD** TO 50300

ISPCC WILL RECEIVE A MINIMUM OF €3.60. SERVICE PROVIDER: LIKECHARITY

Citizens Information

During the COVID -19 pandemic, Citizens Information Centres are offering an email & phone service. If you would like to request a phone call from an Information Officer please email: covid19@citinfo.ie and include your phone number. An Information officer will then give you a call.

#COVID19 Pandemic Unemployment Payment

Have you had to take time off work to look after your children?

If your employer cannot pay you during this time, you can apply for a #COVID19 Pandemic Unemployment Payment online at <https://services.mywelfare.ie/en/>

Applying online for the new #COVID19 Pandemic Unemployment Payment? Make sure you put in your details correctly including your date of birth, PPS number, and 22 digit IBAN number.

Follow the link for more information: <https://bit.ly/33WpEfw>



Feidhmeannacht na Seirbhíse Sláinte
Health Service Executive

HSE Multilingual COVID 19 Resources



Child and Family
Support Network

The HSE have developed a range of COVID 19 resources for families. The resources include posters and booklets for families that have been translated into a number of different languages. Please follow the link below.

<https://www.hse.ie/eng/services/news/newsfeatures/covid19-updates/partner-resources/covid-19-translated-resources/>



To update your service provision please email Jackie Jackson or Alice O Halloran Child & Family Support Network Coordinators Meath - Jackie.Jackson@Tusla.ie,



North Eastern Regional
Drug & Alcohol
Task Force

Cavan ~ Monaghan ~ Louth ~ Meath

North East Regional Drugs and Alcohol Task Force



Addiction support services continue to operate in Meath, largely on a tele-supports basis; and new referrals to the HSE opiate substitution treatment programme continue to be taken

- Family Addiction Support Network - 087 904 6405;
- HSE Drugs team in Meath - 042 939 4008 or 086 464 5372
- HSE Substance Use Supports for Teens (SUST) - 087 375 2760 / 087 173 2088;
- Meath Community Drugs & Alcohol Response - 087 181 2451 / 086 408 1511;
- Merchants Quay Ireland mobile needle exchange - 089 243 5560

HSE National Drugs help-line is available between 10:00 & 17:00 each day on **1800 459 459**

Information is also available on www.drugs.ie & www.askaboutalcohol.ie; or www.nedrugtaskforce.ie

www.hse.ie/coronavirus for information & resources

HSELive - 1850 24 1850

To update your service provision please email Jackie Jackson or Alice O Halloran Child & Family Support Network Coordinators Meath - Jackie.Jackson@Tusla.ie,

Alice.ohalloran@tusla.ie

Daughters of Charity – Preschool Mosney

For preschool parents I have set up a WhatsApp group and I am sending them links to activities for children and other information.

I have made it clear to them that I am available if they need me for anything. I am doing the same via SMS for those who don't have WhatsApp.

Preschool staff have been sent links to online CPD opportunities. I will be sending them stamped addressed envelopes for each child so that they can send letters or Easter wishes to their key children next week.

Contact details: Liz Manville <liz.manville@docharity.ie>



North Eastern Regional
Drug & Alcohol
Task Force

Cavan ~ Monaghan ~ Louth ~ Meath



Child and Family
Support Network

North East Regional Drugs and Alcohol Task Force

DON'T GET LOCKED IN

As we prepare to socially distance ourselves, several countries are reporting an increase in home drinking.

Make your health and home life a priority by following these tips..



Choose Alcohol Free Days

Plan at least two alcohol free days during your week. The more alcohol free days the better!



Don't Stockpile

Don't stockpile alcohol in your home – plan your weekly shop. Only buy as much as you have decided you want to drink during the week. Opt for low-alcohol or no-alcohol choices.



Keep it Late

It can be tempting to drink earlier when you are at home during the day – try to delay any drinking until as late as possible, especially if there are children in your home. Consider a 'time rule' – e.g. No alcohol in our house until after 10pm



Mind the Children

Children can become afraid when adults are drinking. Avoid drinking alcohol until children have gone to bed. Make sure there is at least one non drinking adult in the house at all times.



Out of Sight

Keep alcohol out of sight and out of reach of children. When you pour a drink, put the remainder away out of sight or in another room so you are not tempted to reach for more. Drink water to quench thirst before drinking.



Help is Out There

Making changes can be hard. Contact the HSE support line –1800 459 459 – if you need help or support in reducing your alcohol use.



alcohol forum

+353 74 9125596 / www.alcoholforum.org

To update your service provision please email Jackie Jackson or Alice O Halloran Child & Family Support Network Coordinators Meath - Jackie.Jackson@Tusla.ie,

Alice.ohalloran@tusla.ie

Support Services and Helplines

The logo for LGBT Ireland, featuring a rainbow-colored circular emblem and the text "LGBT IRELAND" in black.

NEED TO TALK?
Help is just a phone call away

| | |
|---|--|
| LGBT Helpline 1890 929 539 Monday to Thursday: 6:30pm - 10pm Fridays: 4pm - 10pm Saturday and Sunday: 4pm - 6pm | Women's Aid 1800 341 900 24hrs 7 days a week Text Service available daily on 087 959 7980 |
| ALONE Supporting older people to age at home 0818 222 024 COVID-19 helpline for older people Everyday 8am-8pm | The Gender Identity Family Support Line 01 907 3707 Sundays: 6pm - 9pm Tuesdays: 10am - 12pm |
| RCC Rape Crisis Helpline 1800 77 88 88 24hrs 7 days a week | HSE helpline 1850 24 1850 Monday to Friday: 8am - 8pm Saturday and Sunday: 10am - 5pm |
| ISPCC Childline 1800 66 66 66 24hrs 7 days a week | Samaritans 116 123 24hrs 7 days a week |

To update your service provision please email Jackie Jackson or Alice O Halloran Child & Family Support Network Coordinators Meath - Jackie.Jackson@tusla.ie, Alice.ohalloran@tusla.ie

Domestic Violence Supports

If someone is in immediate danger 24hrs/7days

Gardaí 112 or 999



WOMEN'S AID
Listening. Believing. Supporting

National Freephone Helpline 24hrs/7days

1800 341 900

Language Interpretation Service 24hrs/7days

1800 341 900

Women's Aid Online Chat Mon/Wed/Fri 7-10pm

WomensAid.ie

For Deaf and Hard of Hearing Women 8am-8pm/7days

Text 087 959 7980



For up to date online information about local
domestic violence support services and refuges

Safeireland.ie



**Male
Advice Line**
Advice & Support for Male Victims
of Domestic Abuse

National Male Advice Line Mon & Weds 10am-6pm,
Tue & Thu 12-8pm, Fri, Sat, Sun 2pm-6pm

1800 816 588

COVID -19



Got a question?

We're here to help.

Callsave: [1850 24 1850](tel:1850241850)

Phone: [041 6850300](tel:0416850300)

Tweet: [@HSELive](https://twitter.com/HSELive)

Monday to Friday: 8am - 8pm

Saturday and Sunday: 9am - 5pm

To update your service provision please email Jackie Jackson or Alice O Halloran Child & Family Support Network Coordinators
Meath - Jackie.Jackson@Tusla.ie, Alice.ohalloran@tusla.ie