

## AVAILABLE SUPPORTS

### Seniors Alert Scheme (SAS)

Are seniors in your area aware of the Seniors Alert Scheme? The SAS supplies emergency alarm pendants for seniors.

For further information, please visit [www.pobal.ie](http://www.pobal.ie)

### CLÁR Programme

The Department of Rural and Community Development has provided funding under the CLÁR programme to provide support for emergency responders in disadvantaged rural areas.

Details on eligibility and the application process are published on the Department's website [www.drcd.gov.ie](http://www.drcd.gov.ie)

### Libraries

Libraries are welcoming spaces at the centre of the community where people can access newspapers, books, online resources, free WiFi, computers and communal spaces. People can go to their libraries to reflect, connect and learn.

For more information on the services you can access at your local library, please see [www.librariesireland.ie](http://www.librariesireland.ie)

### Volunteering

Ireland has a strong tradition of volunteer activity. From checking in on vulnerable neighbours to staffing helplines, formal and informal volunteers have made a huge contribution during recent extreme weather events.

For more information on how you can contribute to your community, please see [www.volunteer.ie](http://www.volunteer.ie)

## GENTLE REMINDER: CHECK ON YOUR OLDER RELATIVES AND NEIGHBOURS



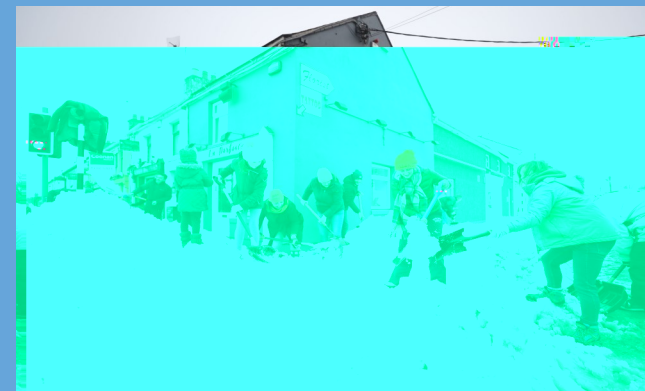
If it's difficult for you to get around it will be impossible for them.

- Do you have their phone number(s)?
- Phone them or call around
- Make sure they have enough fuel, food supplies and necessary medications
- If in doubt call the Gardaí and ask them to check

### You can get more information from:

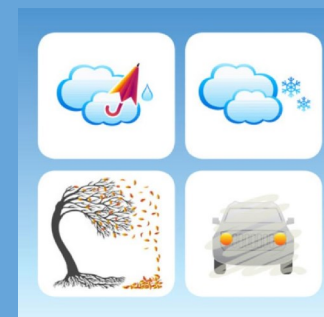
- [www.winterready.ie](http://www.winterready.ie)
- [www.drcd.gov.ie](http://www.drcd.gov.ie)
- [www.mapalarter.com](http://www.mapalarter.com)
- [www.undertheweather.ie](http://www.undertheweather.ie)
- [www.emergencyplanning.ie](http://www.emergencyplanning.ie)
- [www.met.ie](http://www.met.ie)

# BE WINTER-READY



*You*

*Your Community  
and the Winter*



LoCall OEP: 1890 252 736 or 0761 001 608  
e-mail: [oe@defence.ie](mailto:oe@defence.ie)



[www.winterready.ie](http://www.winterready.ie)  
[@emergencyIE](https://twitter.com/emergencyIE)



Rialtas na hÉireann  
Government of Ireland

## BUILDING STRONG COMMUNITIES

Winter readiness is a challenge for individuals and communities across Ireland each year, and calls for cooperation and collaboration between many different groups.

The Department of Rural and Community Development (DRCD) has a unique role to play in fostering the links that bring communities together. Our mission is to “*promote rural and community development and to support vibrant, inclusive and sustainable communities throughout Ireland.*”

Strengthening community links helps to improve preparedness for emergencies. Experience has shown that active preparation leads to a better response in an emergency, leading to the best possible outcome for all concerned. This preparedness enables the community to come together to use locally identified resources (people and equipment) during an emergency affecting their community, such as the flooding and heavy snowfall of recent years.

Although the response to challenging weather events is coordinated by the Office of Emergency Planning (OEP), communities have an important role to play in emergencies. Central to this is neighbours knowing each other and working together. Being prepared, knowing your neighbours and working together will help to ensure that you and your community are winter ready in the months ahead.

## BEING PREPARED

### Know Your Community

Is your community based around an apartment building, a housing estate, a street, a road or a village? Is there a local residents’ association or community alert group?

### Neighbourhood Supports

Do you have your neighbours’ contact details?

How can you help each other? For example, do you or your neighbour have an off-road vehicle or medical experience?

### Planning

What emergencies might your community have to plan for? For example, fire, flooding, snow, power outage, water shortage or accessibility problems.

### Vulnerable Neighbours

Are some of your neighbours particularly vulnerable? For example, older people, people with disabilities or mobility problems, neighbours with young children or people without access to transport.

### Remember

- Know your Eircode
- Know your GP’s Contact Details
- Get the flu vaccine
- Keep your phone charged
- Keep warm, eat well and avoid unnecessary travel
- Know how to turn off your utility services (electricity, gas, water) in your home

## EMERGENCY CONTACTS

- Fill in your contact numbers below
- Keep your contact numbers on display
- In the event of an emergency, dial 999 or 112

Eircode:

Electrician:

Emergency Contact:

Family GP:

Hospital:

Local Authority:

Neighbour:

Pharmacist:

Plumber:

Residents’ Association/  
Community  
Alert Group:

# You, Your Community and the Winter