

Co Wicklow PPN

Developing & Using a Vision for Community Wellbeing

- “Each county/city PPN will commence its work by going through a process to set out what it considers necessary to promote well-being for present & future generations”

*Working Group Report on Citizen Engagement with Local Government
–DECLG Feb 2014*

- “This process begins at Municipal District level. This statement will act as a guiding vision statement for everything done by the group that drew up the statement”

Circular CVSP2/2014



Vision for
Community
Wellbeing

Co Wicklow PPN

Developing & Using a Vision for Community Wellbeing

- Stakeholder discussions/Reference group
- Top down (Scotland, Northern Ireland, Canada, US) v Bottom Up Community approach
- Facilitate the development of a tool –kit to support PPNs to develop their Wellbeing Statements
- Pilot Programme funded by EPA late 2017





Vision for
Community
Wellbeing

Co Wicklow PPN

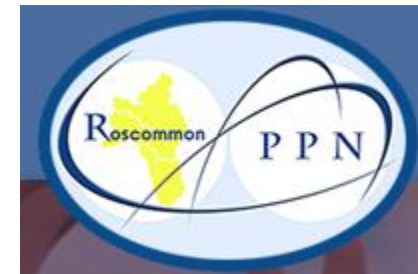
Developing & Using a Vision for Community Wellbeing

Pilot Programme 2018

- Cork City
- Longford
- Roscommon
- Wicklow

Supported By

- Dr Harriet Emmerson
- Sara Bourke –Social Justice Ireland
- Dr Simon O' Rafferty – Environmental Protection Agency
- Michael Ewing & Justin Byrne – Irish Environmental Network





Vision for
Community
Wellbeing

Co Wicklow PPN

Developing & Using a Vision for Community Wellbeing

What is this Wellbeing Vision?

Although we often think about wellbeing in terms of good physical and mental health, it can also describe the wider conditions we need as individuals and communities to have a better quality of life, healthier environment and increased prosperity. Considering all the aspects of community wellbeing together helps us to identify actions that can be undertaken by communities alongside local and national governments.



Why? To measure how well a community is thriving





Vision for
Community
Wellbeing

Co Wicklow PPN

Developing & Using a Vision for Community Wellbeing



1

Workshop

PPN Members were invited to attend Community Wellbeing workshops.

At these workshops the Community Wellbeing concept was presented.



2

Asset Mapping

Working in groups, attendees then highlighted the “assets” and aspects of their community that they wish to preserve and protect for current and future generations.



3

Wellbeing vision

Using the 6 Community Wellbeing headings, attendees shared what they (and the organisations they work for) considered to be important for their community's wellbeing.



4

Consultation

Following the workshop, an online consultation was shared with members who were unable to attend the workshops.

They were provided the opportunity to answer the same questions asked at the workshop.



5

Draft Vision

The PPN resource workers and secretariat members then analysed the responses from the workshop and online consultation.

They then produced the draft wellbeing statements.





Vision for
Community
Wellbeing

Co Wicklow PPN

Developing & Using a Vision for Community Wellbeing



The Result

- Wellbeing Vision & High Level Goals for Each Municipal District
- Overall County Vision & High Level Goals
- Visions Collated by Each Heading

Available on our website:
www.countywicklowppn.ie



Vision - “Our wise use of resources, and our care and connection with our environment enables all citizens to live healthy and sustainable lives. ”.

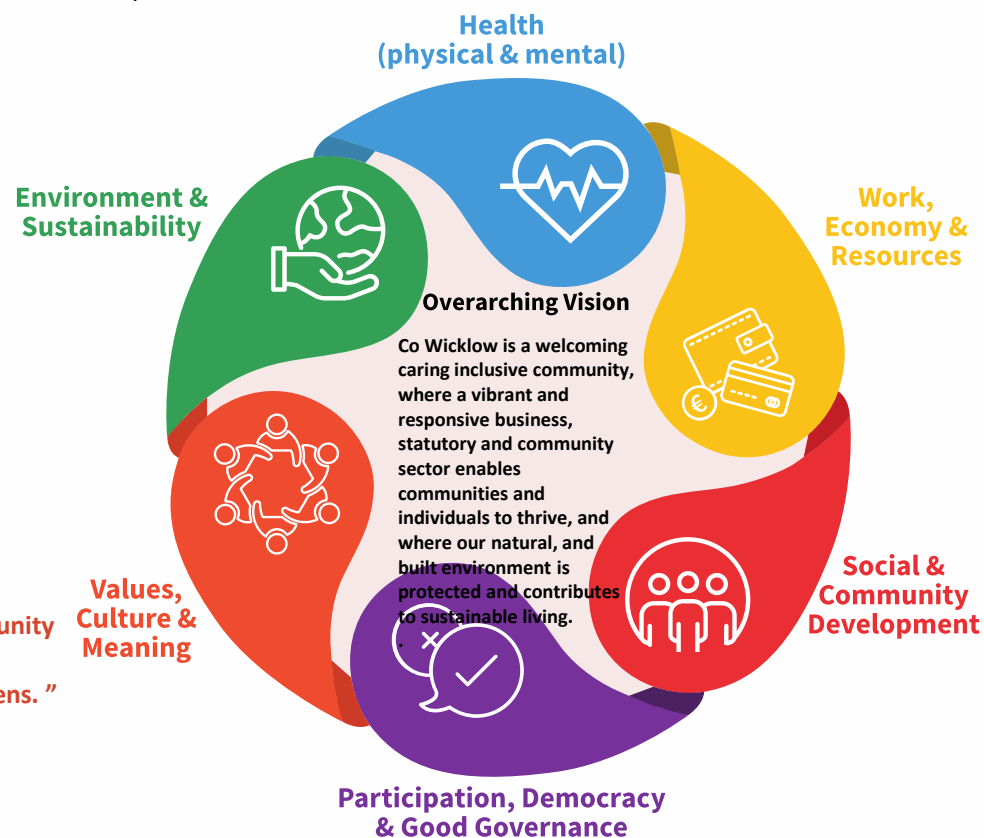
- All planning decisions and development support sustainability and liveability
- A cared for and accessible natural environment supports healthy communities
- All citizens have an awareness, appreciation and a strong connection to the natural environment and work together to protect it.

Vision - “Co Wicklow is a modern welcoming, caring and inclusive community that values the environment, and the culture and heritage of its diverse citizens. ”

- We preserve our culture, traditions and heritage for future generations
- The impact of diversity in enriching our community is recognized, valued and supported.
- Supports, information and resources enables volunteering and facilitates all citizens to connect, engage and participate in their community
- The importance of our natural environment is understood, recognised and appreciated.

Vision - “Co Wicklow is a caring community where everyone has a good level of physical and mental health”

- Accessible, coordinated and well-resourced statutory & community services & facilities support the good health of all citizens
- Our natural & built environment contributes to the good health of the community
- The health related needs of all and especially our more vulnerable citizens are met.
- Extensive and coordinated information, education and early intervention initiatives promote good physical and mental health



Vision - “Transparent and accountable local governance structures and procedures allows all citizens to contribute to the development of a county that responds to their needs.”.

- All statutory and community stakeholders are collaborating and ensuring that the voice of all people, and especially the more marginalised is heard
- Grass roots development is encouraged, supported, resourced and uninhibited by bureaucracy.
- Local government is participative, inclusive, accessible and responsive to the needs of the community

Vision - “Our vibrant local economy supports all our citizens to live well and thrive”

- The statutory, business and community sectors recognise and value the skills of all citizens and enable them to contribute meaningfully in the local economy
- People, businesses, facilities, and services are well connected physically, electronically and socially
- Enterprise activity within the county is sensitive to our environment and people and is enabled to achieve its full economic growth and potential

Vision - “Co Wicklow is an inclusive, caring and supportive community that nurtures all its citizens equally”

- Statutory, private and community services and facilities are well resourced, collaborating, coordinated and easily accessible to all.
- Diversity is recognised and valued, and everyone is included, engaged and active in their community.
- The contribution of volunteers and the community sector is recognised, valued and supported.
- The needs of our communities, particularly the more marginalised are met.

Environment & Sustainability



Arklow MD

Vision - 1. “All statutory, business and community stakeholders work together to preserve, protect, maintain and promote our natural and built environment”.

- 1.1 Infrastructure and resources support sustainable living
- 1.2 Research, consultation and education supports citizens and communities to protect the environment for future generations
- 1.3 All citizens appreciate and are connected to the natural environment

Greystones MD

Vision - 1. “All citizens of Greystones MD are actively conserving and protecting the environment and living more sustainably ”.

- 1.1 Knowledge and appreciation of the natural and built environment is cultivated
- 1.2 All planning decisions and developments are environmentally sensitive.
- 1.3 Excellent accessible recreational facilities promote a healthy lifestyle
- 1.4 All citizens are socially connected within a safe and secure community

COUNTY WICKLOW

Vision - “Our wise use of resources, and our care and connection with our environment enables all citizens to live healthy and sustainable lives. ”

- All planning decisions and development support sustainability and liveability
- A cared for and accessible natural environment supports healthy communities
- All citizens have an awareness, appreciation and a strong connection to the natural environment and work together to protect it

Baltinglass MD

Vision -1. “The natural environment of the Baltinglass MD is accessible, appreciated, protected and cared for”.

- 1.1 The natural environment, including our mountains, water and landscape, and the heritage of Baltinglass MD is protected
- 1.2 Community awareness and appreciation of the natural environment and heritage is encouraged
- 1.3 Access to heritage and the natural environment is increased
- 1.4 People live more sustainably
- 1.5 Planning supports sustainability and liveability

Bray MD

Vision – 1. “Sustaining our environment is built into every other aspect of Community Wellbeing”.

- 1.1 The community is aware, emotionally connected and actively involved in the stewardship of the natural and built environment
- 1.2 People are supported to live sustainably
- 1.3 Planning supports sustainability and liveability
- 1.4 The local and natural environment supports healthy communities.

Wicklow MD

Vision – 1. “Every policy, plan and decision of every organisation in the statutory, private and community sector is environmentally proofed. ”

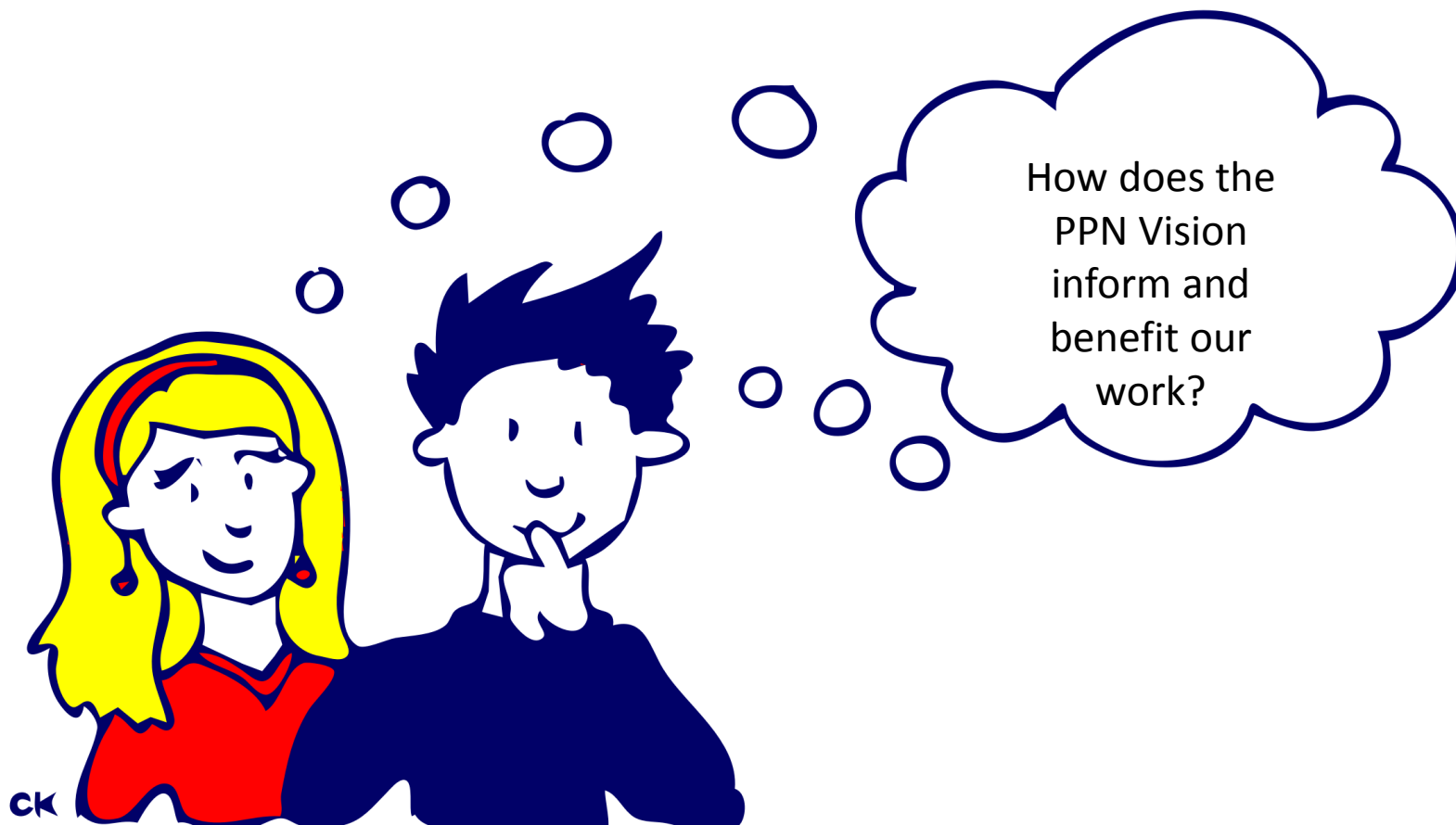
- 1.1 A vibrant, environmentally sensitive, local economy supports sustainable living
- 1.2 All stakeholders in the Municipal District are working together to nurture and protect the natural and built environment
- 1.3 All citizens are connected with and appreciate the local natural environment.



Vision for
Community
Wellbeing

Co Wicklow PPN

Developing & Using a Vision for Community Wellbeing





Vision for
Community
Wellbeing

Co Wicklow PPN

Developing & Using a Vision for Community Wellbeing

Relationship Building, Engagement, & Learning



Co Wicklow Volunteer Centre
KWETB
Partnership Companies
Wicklow Travellers Group
Bray Family Resource & Development Centre
County Childcare Committee
Neighbouring PPNs
Environmental Protection Agency
Irish Environmental Network
Social Justice Ireland
Wicklow County Council
PPN Member Groups – Hollywood Network





Vision for
Community
Wellbeing

Co Wicklow PPN

Developing & Using a Vision for Community Wellbeing

- Gives the PPN a direct mandate from community groups
- Supports our PPN Representatives on the various committees which they sit on
- Informs our Submissions: 2019 - CFI Development of Volunteering Strategy, Co Wicklow Policing Plan, Heritage Ireland 2030, Wicklow Outdoor Recreation Strategy, WCC Draft Climate Change Adaptation Strategy, WCC Draft SPC Scheme.





Vision for
Community
Wellbeing

Co Wicklow PPN

Developing & Using a Vision for Community Wellbeing

Feeding into the WCC Draft Climate Change Adaptation Strategy



Co. Wicklow “Our wise use of resources, and our care and connection with our environment enables all citizens to live healthy and sustainable lives.”

The PPN wants Wicklow County to care for our environment & use resources wisely

General

Ba.1 The natural environment of the Burren and Cliffs of Moher is accessible, appreciated, protected and cared for

G.1 All citizens of Greystones MD are actively conserving and protecting the environment and living more sustainably .

Where sustainability is built in to every policy, plan and decision

A. 1 All statutory, business and community stakeholders work together to preserve, protect, maintain and promote our natural and built environment

W.1 Every policy, plan and decision of every organisation in the statutory, private and community sector is environmentally proofed.

Br.1 Sustaining our environment is built into every other aspect of Community Wellbeing

What Does Wicklow Have to say About Climate Change?

G.1.2 All planning decisions and developments are environmentally sensitive.

All citizens are connected with our natural environment

A.1.2 Research, consultation, and education supports citizens and communities to protect the environment for future generations.

Planning, Decisions & Development are Environmentally Sensitive

Br.1.3 Planning supports sustainability and liveability.

People Live More Sustainably

W.1.3 All citizens are connected with and appreciate the local natural environment

More specifically

Guidance from all 6 headings across all 5 MDs

Values, Culture & Meaning - Aim is:

- The importance of our natural environment is understood, recognised, and appreciated
- Communities are enabled to play an active part in the preservation & protection of our heritage & culture
- We value our environment and the heritage & culture of all our citizens

Work Economy & Resources - Aim is:

- Enterprise activity within the county is sensitive to our environment;
- natural resources are nurtured to achieve their full economic potential;
- The economy supports access to adequate food, housing and opportunities for all
- environmentally sensitive place for business and people to thrive.
- Holistic Planning and development practices supports the needs of all citizens

Environment & Sustainability

- Aim is:

- To Work together to preserve, protect, maintain, & promote our natural environment
- That Decisions & development are environmentally sensitive
- Supporting sustainability & liveability

What Does Wicklow Have to say About Climate Change?

Participation, Democracy & Good Governance - Aim is:

- All elements of government are collaborating & delivering for communities
- Community Wellbeing is recognised as a crucial part of development
- Government fulfils commitments
- Government is participative, inclusive & responsive to the needs of the community

Health - Aim is:

- The built and natural infrastructure facilitates good health and resilient communities
- The natural environment is protected and enabled to contribute to the health of all citizens
- The natural environment is protected and enabled to contribute to the health of all citizens
- The local, social and natural environment facilitates good health
- Our natural & built environment promotes good physical and mental health
- Our natural & built environment contributes to the good health of the community

Social & Community Development - Aim is:

- Statutory, private & community services & facilities are well resourced, collaborating, coordinated & easily accessible to all
- All citizens are enabled to actively engage in the development of their community
- Work together for the benefit of all citizens
- Nurturing community



Vision for
Community
Wellbeing

Co Wicklow PPN

Developing & Using a Vision for Community Wellbeing

Feeding into an Integration Strategy



Values, Culture & Meaning

Co. Wicklow is a modern, welcoming, caring & inclusive community that values the environment, & the culture & heritage of its diverse citizens.

Ba.1 Baltinglass MD is a welcoming place that values its culture & heritage & embraces that of others.

G.1 Greystones MD is a welcoming & caring community that values its environment & the heritage & culture of all its citizens.

General

- **The PPN wants Wicklow County to be**
- **a welcoming & caring place**
- **where difference is respected**
- **and all people & cultures are valued and celebrated**

Br.1 All citizens are valued, equally included & diversity is embraced.

A.1 Welcoming, including & valuing all citizens & celebrating diverse cultures is at the heart of the Arklow Municipal District.

w.1 Wicklow MD respects difference, celebrates diversity & values the uniqueness of individuals & communities.

Developing an integration strategy for the County

G.1.1 An inclusive society that *values, promotes & celebrates our native culture & other cultures* in our diverse community.

A.1.3 The culture & voice of all citizens & communities is **welcomed, heard & valued**.

A.1.4 All citizens & communities are **encouraged to share their culture & use their voice**.

Br.1.3 *Community infrastructure & services support & facilitate the diverse needs of all citizens.*

Br.1.2 The *impact of diversity in enriching our community is recognised, valued & supported.*

- **Promote & celebrate native AND other cultures**
- **(Support enriching of community through diversity)**
- **Encourage all communities to share their culture & use their voice**
- **Provide community infrastructure & services to support diverse needs of all citizens**

More specifically

Guidance from all 6 headings across all 5 MDs

Values Culture & Meaning Aim is to:

- create a welcoming & caring place;
- where difference is respected; and
- all people & cultures are valued & celebrated

Specifically by:

- promoting & celebrating BOTH native & other cultures;
- encouraging all communities to share their culture & use their voice;
- providing community infrastructure & services that support the needs of all citizens

Economy & Resources Aim is:

- for local economy to support all citizens to access adequate food, housing & opportunities, & to live well & thrive;
- supports are given to people, groups & enterprises to create flexible & accessible job opportunities;
- for all citizens to be able to have a meaningful role in the local economy;
- for information provision, technology & transport to enable all members of the community fulfil their potential.

Environment & Sustainability Aim is to:

- ensure **all** citizens are socially connected within a safe & secure community;
- **all** citizens are connected with, appreciate & work together to nurture & protect the natural & built environment

Developing an integration strategy for the County

Participation Democracy & Good Governance Aim is:

- for all elements of government to be accessible & responsive to the needs of all citizens;
- everyone contributes to decision-making & development;
- structures & processes are inclusive and supportive of all citizens, who are supported to participate

Health (P&M) Aim is that:

- people are connected & enjoy a good level of social & community supports;
- **all** citizens have their basic needs met, are resilient, active & enjoy a good level of physical & mental health;
- everyone has access locally to co-ordinated & high-quality statutory & community services & facilities that support good health of **all**;
- extensive, co-ordinated information, education & early intervention initiatives are an integral part of community & statutory services.

Social & Community Development

Aim is to:

- promote the empowerment of all members of the community
- resource excellent social structures to support an inclusive caring community;
- have all citizens actively engaged in their local community;
- ensure the needs, safety & security of all citizens, particularly **the more marginalised**, are met;
- Statutory & community services meet the diverse needs of the community, particularly the **more vulnerable citizens**

Co Wicklow PPN

Developing & Using a Vision for Community Wellbeing

Local Elections 2019

Co Wicklow PPN asked all the running candidates to sign up to working towards each Municipal District's Vision for Community Wellbeing





Vision for
Community
Wellbeing

Co Wicklow PPN

Developing & Using a Vision for Community Wellbeing

Vision for Community Wellbeing & The Global Goals for Sustainable Development Connecting The Local To the Global



Co Wicklow PPN

Developing & Using a Vision for Community Wellbeing

Future Uses

- Continue to support PPN Reps
- To develop PPN position papers
- To focus the work of thematic networks e.g. JPC Reps Network
- To feed into next editions of: LECP- Local & Economic Community Plan, CDP - County Development Plan, Local Area Plans etc
- To develop a PPN Strategic Plan

Co Wicklow PPN

Developing & Using a Vision for Community Wellbeing



THANK YOU!
Questions?



**Vision for
Community
Wellbeing**