

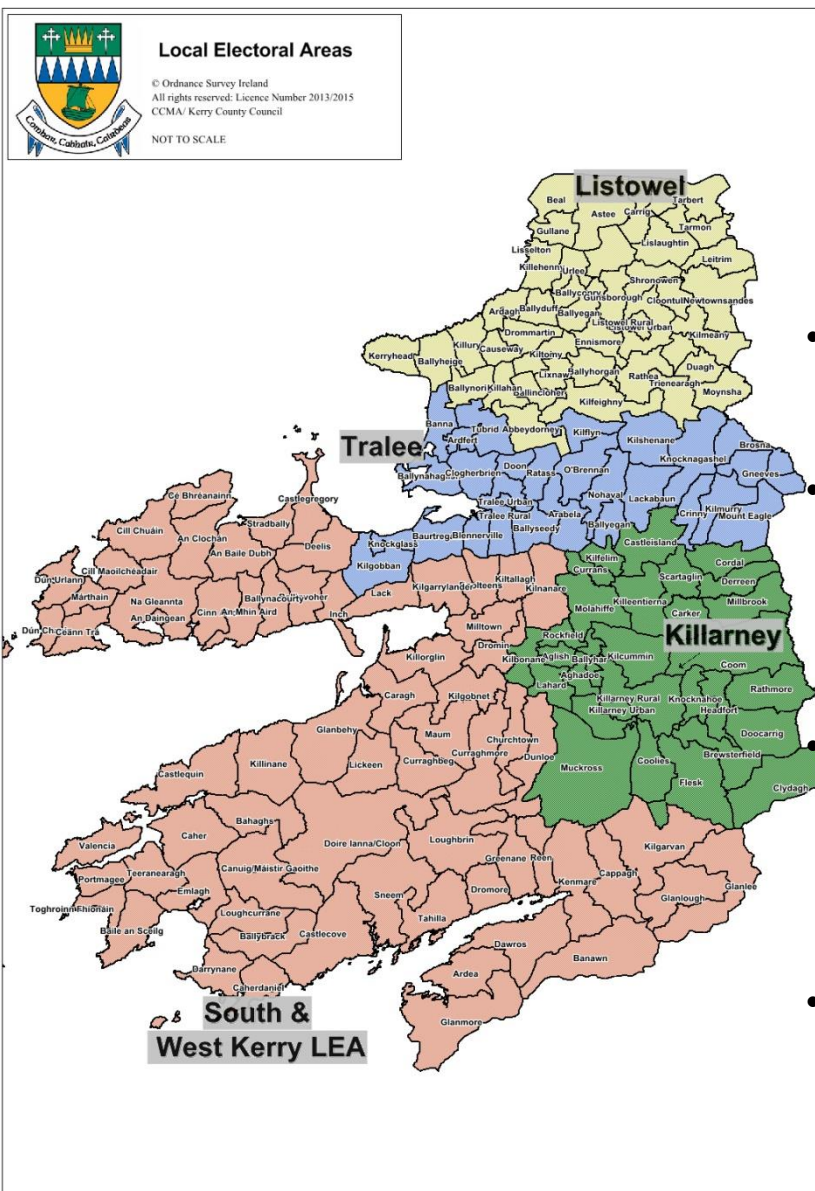


ACCESS FOR ALL

REPORT ON DISABILITY AWARENESS WORKSHOPS IN CO. KERRY



Líonra Páirtíochta Pobail Chiarraí
KERRY PUBLIC PARTICIPATION NETWORK



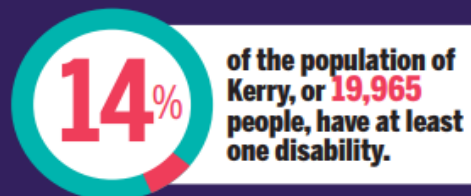
Kerry Stats

- County Kerry is located in the South West region of Ireland and Is a large rural county which occupies an area of 4,800sq.km.
- Although it is accessible with road, rail and air links, one of the greatest challenges faced by Kerry is the rural nature of the county.
- To truly create an environment where people with disabilities can participate in communities with equal rights to live life to their full potential, we must understand, embrace and really accept what is known as the social model of disability.
- As one of the participants stated ,

“ It is the structures, systems and decisions of society that are disabling”

Disability Profile - County Kerry

- On the night of the last Census, there were almost 148,000 people living in Kerry.
- Of these, 13.5% or 20,000 have a disability.
- At a local level, we still have not resolved numerous simple basic access issues for people living in Kerry.



Type of Disability

People in Kerry reported having the following types of disabilities and conditions:

8,688 Difficulties with basic physical activities

8,542 Difficulty with pain, breathing, or other chronic illness/condition

4,778 Learning Difficulty

3,370 Deafness or serious hearing impairment

3,350 Mental health

2,144 Intellectual Disability

1,713 Blindness or a serious vision impairment

AGE

Their age profile is:

0-14 1739

15-24 1516

25-44 3370

45-64 5625

65+ 7715



EDUCATION²

In 2016, only 12% of people who have a disability were in education compared to 16% of the general population in Kerry.³ For those whose education had finished:⁴

32% did not progress beyond primary education compared to 14% of the general population.

17% had completed upper secondary compared to 20% of the general population.

13% had completed further education compared to 17% of the general population.

18% had completed higher level education compared to 31% of the general population.

EMPLOYMENT

TRANSPORT

HOUSING



Background: Kerry County Council policy

During the development of the Local Economic and Community Plan 2016 – 2022, Kerry County Council, recognised that in order to affect change, in order to be progressive, ***collaboration between all stakeholders*** – both private/public and organisational/individual was of paramount importance.

Local Economic and Community Plan

High level goal 3.7 of Kerry Local Economic & Community Plan 2016-2021 states;

‘To create an environment where people with disabilities can participate in communities with equal rights to live life to their full potential’

Kerry PPN was identified as lead partner for the delivery of this action.

- The Kerry PPN linked in with other partners , the Disability Federation of Ireland and the local access groups.
- The partners agreed the need for a consultation process and the need to engage with people with disabilities.

THE HOW OF THE WORKSHOPS – SOLUTION FOCUSSED

- Pre development work
- Access Groups
- Workshop format
- Locations agreed and access checked by DFI
- Linked with other stakeholders regarding support
- Identified note takers and facilitators
- Arranging meet and greet
- Training and buddy system
- Pilot workshop
- What is the vision – **that their voice would be documented as expressed.**



Workshop Objectives

- To create an awareness of the **challenges** people with disabilities face.
- To **strengthen links** and **improve communication** between community, voluntary and statutory agencies.
- To **support** the involvement of people with disabilities in **decision-making**, through the PPN.
- To **develop** a disability representative group at county level linked to the PPN which represents people with disabilities in Co. Kerry.
- To hold workshops that would be **strategically solution focussed** around the work of the four Strategic Policy Committees of Kerry County Council.
- To have **clear next steps** built in so that at the end of the workshop, all participants would be aware of a feedback meeting.

Round Table Format

<u>Table 1</u>			<u>Table 2</u>		
	Name	Group		Name	Group
1	Aine O Sullivan	DFI (Facilitator)	1	Laura English	DFI (Facilitator)
2	Gillian Wharton	PPN (Note - Taker)	2	John Spillane	PPN (Note-Taker)
3	Tim O Sullivan	ACCESS	3	Margaret Kenny	ACCESS
4	Jonathan O Brien	HSE	4	Helena Switzer	KCC - Community
5	Peter O Mahony	Kerry County Childcare	5	Catherine Carty	ITTralee
6	Aidan Doyle	KCC - Planning	6	Connie O Leary	Ballyspillane FRC
7	Paudie Healy	Universal Access	7	Pauline O Connor	REHAB Care
8	Mary Meade	REHAB	8	Bill Morrell	PPN
9	Oliver Mawe	TUSLA	9	Fiona Collins	Brehon Hotel - Access Offier
10	Kevin Griffin	Social Farming	10	John Sheahan	Cathaoirleach

Themes – based on the Strategic Policy Committees area of work

THE FOUR COMMITTEES COVER THE FOLLOWING AREAS:

Economic Development and Enterprise

- Planning and sustainable development
- Capital infrastructure
- Business Support
- Economic Planning
- Promoting Kerry

Operations

- Transport Policy
- Service delivery plan
- Bye laws
- Casual trading

Tourism, Culture, Arts and Recreation

- Tourism
- Culture/Heritage
- Arts
- Irish Language
- Commemorative events
- Recreation policy
- Libraries

Economic Development and Enterprise

- Housing policy
- Social supports
- Environmental protection
- Rural transport
- Emergency services

Key Questions

What are the issues under this theme that prevent or limit people with disabilities fully participating within society?

What effect does that have on people?

What actions need to be taken and by whom?

Operations SPC

Service Delivery Plan:

- Roads,
- Housing improvements and maintenance works
- Street cleaning,
- Public lighting,
- Maintenance of Parks and open spaces
- Public conveniences.
- Bye Laws
- Transport Policy
- Casual trading

Some issues raised



- Lack of opportunity to participate
- Extra costs
- Fears in emergency situations
- Community involvement
- Sense of isolation
- Not feeling welcome
- Few opportunities for employment
- Feeling more vulnerable
- Needs compromised
- Limited independence
- Poorer mental health.

Some outcomes from the workshops

- **Relationships** have been built from members of local access groups and different departments of Kerry County Council and the Health Service Executive.
- Access is being kept on the **agenda** and continues to be highlighted.
- PPN Linking in regarding **walkability audits** under the Age Friendly Programme.
- PPN through the Community Enhancement Fund now have a **portable loop system**
- Environmental Department of Kerry County Council, immediately linked in with the local access groups in the areas and started a campaign on **dog fouling**, following on from the consultation feedback.
- **Local Link Kerry** now have access as a standing item on their agenda and the report has formed part of the actions in their workplan .
- Good foundation laid for development of **linkage groups** in County Kerry.
- All elected members of Kerry County Council have a **access report** and the Kerry PPN are working on having the **PPN as a standing item** on the newly adopted Strategic Policy Committee Scheme.

Outcomes

The “Access for all – disability consultation” workshops proved to be very successful. This is clearly evidenced by the words and feedback from the participants. The themes examined by the participants at the workshop and the feedback from the roundtable discussions has provided valuable information.

The actions arising from the workshop now need to be pursued to make Kerry a more disability-friendly county.

Across all discussions it was clear that there had been a void in providing a basic discussion forum to begin exploring the issues. The workshop provided a good starting point with regard to a conversation around addressing this need.

“It gave me hope for the future for people with disabilities, that Kerry would become more accessible and inclusive”

“Gaining greater awareness of challenges facing people, not just with disabilities but on a social and physical level”

“It was wonderful to get the opportunity to meet others from different organisations and to learn about the challenges that face their client groups.”



Kerry Public Participation Network,
Kerry County Council,
County Buildings,
Rathass,
Tralee,
Co. Kerry

Contact: Caroline Toal, Development Officer
Tel: 066 7183500
E: ctoal@kerrycoco.ie
<https://www.facebook.com/kerryppn/>
www.kerryppn.ie



Lionra Páirtíochta Pobail Chiarraí
KERRY PUBLIC PARTICIPATION NETWORK